

THE ORIGINAL CHERRY BLOOMS

FIBER LASH EXTENSIONS

95% of women said it made their lashes 3 times longer & thicker.

83% said it was easy to apply and didn't flake in their eyes.

92% said it was rich black in color and made their eyes look bolder.

91% said they will buy again and recommend to others.

*Consumer study results of 200 women



**600%
LARGER
LASHES**

NO GLUE, NO MESS, NO FLAKING
600% MORE VOLUME AND LENGTH
IN UNDER 2 MINS

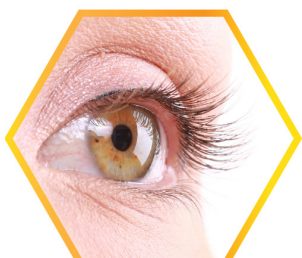
THE ORIGINAL NO FLAKE BLACK FIBERS

THE BEAUTY MUST-HAVES

In three easy steps, Cherry Blooms Fiber Lashes give you the effect of extensions, without the drawbacks. High quality beeswax hydrates lashes while fibers add 3D volume. Watch lashes **AMPLIFY** by 600%. It's cry, laugh and sweatproof, yet melts off with warm water. It's the ultimate game-changing beauty product.

HOW IT WORKS

- Based on natural ingredients, including high quality beeswax, the kit includes a tube of transplanting gel and a tube of brush-on black fibers
- Apply using a simple 3-step process.
- Cherry Blooms adheres to your lashes with no glue or irritation and acts like instant eyelash extensions
- Remove by washing off with warm water and cotton ball
- Each kit lasts for approximately 90 days with daily use otherwise it has a three-year shelf life



STEP 1

Apply a generous coat of Transplanting Gel to clean dry eyelashes.
(Approx. 20 strokes)



STEP 2

Apply the tube of Fiber. Position the wand in the middle of your lashes and brush to ends. Avoid applying too close to the eyeball and brush slowly using straight strokes. No wiggling in order to achieve neat and defined lashes.
(Approx. 5-15 strokes).



STEP 3

Seal the Fibers with the Transplanting Gel to lock them in place. Make sure you do this well to avoid fibers falling off. This is a very important step.
(Approx. 20 strokes).

TIP: After step 3 has dried, apply an extra coat of the Transplanting Gel to ensure the fibres have been completely sealed.

REPEAT STEPS 1-3 FOR THE MOST DRAMATIC LOOK!